

# SOYBEANS

## GH3980L<sub>BRAND</sub>

RM:  
3.8

*The following product descriptions and ratings are sourced from the variety's genetic supplier.*



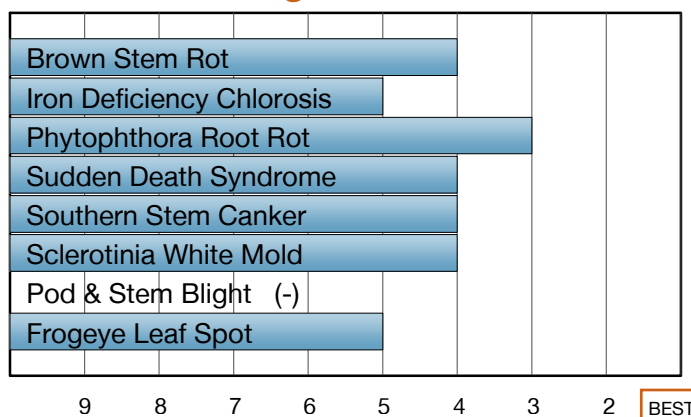
### TOP-END YIELDS FOR YOUR BEST ACRES

- For the low-stress, highly productive acre
- Good standability for ease of harvest
- Top-end yields with stability

### Plant Characteristics

Plant Height	<b>Medium</b>
Canopy/Plant Type	<b>Medium</b>
Branching	<b>Not Available</b>
Growth Habit	<b>Indeterminate</b>
Flower Color	<b>White</b>
Pubescence Color	<b>Light Tawny</b>
Pod Color	<b>Tan</b>
Hilum Color	<b>Black</b>
Chloride Sensitivity	<b>Includer</b>

### Disease Ratings



### Agronomic Traits

Emergence	<b>2</b>
Standability	<b>3</b>
Shatter Tolerance	<b>2</b>
Green Stem	-
Estimated Seed Size	-
% Protein at 13% mst.	<b>34.6</b>
% Oil at 13% mst.	<b>18.5</b>
Narrow Rows	-
Wide Rows	-

### Adaptation to Soil Types

Drought Prone	-
High pH*	-
Highly Productive	-
Moderate/Variable Environments	-
Poorly Drained	-

### Diseases and Pests

Phytophthora Root Rot (PRR) Source	<b>Rps1c</b>
Soybean Cyst Nematode (SCN) Races	<b>MR**</b>
(SCN) Source	<b>PI88788</b>
Root-Knot Nematode (RKN) Southern	<b>4</b>
Peanut	-
Javanese	-

For more info or to view product performance data: [www.goldenharvestseeds.com](http://www.goldenharvestseeds.com) (800) 944-7333



Product descriptions and ratings are sourced from the variety's genetic supplier and may change as additional data are gathered.

©2018 Syngenta. Golden Harvest®, SCN Solutions™, the Alliance Frame and Syngenta logo are trademarks of a Syngenta Group Company. Liberty®, LibertyLink®, and the Water Droplet logo are trademarks of Bayer. Golden Harvest Soybean varieties are protected under granted or pending U.S. or Canadian variety patents and other intellectual property rights. It is unlawful to save Golden Harvest soybeans for planting or transfer to others for use as a planting seed, regardless of the trait(s) within the seed. Follow grain marketing and all other stewardship directions. Details of these requirements can be found in the Syngenta Stewardship Agreement.

1-9 Scale: 1 = Best, 9 = Worst, (-) = Not Available, NA = Not Applicable.

Icon Scale: ★ Best Choice ● Good Choice ▼ Average to Slightly Below Average ✗ Not Recommended

\* Represents an assessment of stand establishment, chlorosis severity and yield performance

\*\* Race not specified

Published June 08, 2018. For use until July 01, 2019.



Seed products with the LibertyLink® (LL) trait are resistant to the herbicide glufosinate ammonium, an alternative to glyphosate in corn and soybeans, and combine high-yielding genetics with the powerful, non-selective, postemergent weed control of Liberty® herbicide for optimum yield and excellent weed control.